

Existing Tree Report

ID	Botanical Name	Common Name	Action	Notes
T1	Eucalyptus moluccana	Grey Box	Retain	Council street tree
T2	Eucalyptus crebra	Narrow-leaved Ironbark	Remove	Council Street tree
T3	Eucalyptus moluccana	Grey Box	Retain	Council street tree
T4	Eucalyptus tereticornis	Forest Red Gum	Remove	dead
T5	Eucalyptus tereticornis	Forest Red Gum	Remove	dead
T6	Eucalyptus tereticornis	Forest Red Gum	Remove	dead
T7	Eucalyptus moluccana	Grey Box	Retain	Adjoining tree
T8	Eucalyptus tereticornis	Forest Red Gum	Remove	dead
T9	Eucalyptus tereticornis	Forest Red Gum	Remove	dead
T10	Eucalyptus tereticornis	Forest Red Gum	Remove	dead
T11	Eucalyptus tereticornis	Forest Red Gum	Remove	dead
T12	Eucalyptus tereticornis	Forest Red Gum	Remove	dead
T13	Eucalyptus tereticornis	Forest Red Gum	Remove	dead
T14	Eucalyptus tereticornis	Forest Red Gum	Remove	dead
T15	Eucalyptus tereticornis	Forest Red Gum	Remove	dead
T16	Eucalyptus moluccana	Grey box	Remove	dead
T17	Eucalyptus tereticornis	Forest Red Gum	Remove	dead
T18	Eucalyptus moluccana	Grey Box	Retain	Adjoining tree
T19	Eucalyptus moluccana	Grey Box	Retain	Adjoining tree
T20	Eucalyptus tereticornis	Forest Red Gum	Retain	Adjoining tree
T21	Eucalyptus tereticornis	Forest Red Gum	Retain	Adjoining tree
T22	Eucalyptus tereticornis	Forest Red Gum	Retain	Adjoining tree
T23	Eucalyptus tereticornis	Forest Red Gum	Retain	Adjoining tree
T24	Eucalyptus tereticornis	Forest Red Gum	Retain	Adjoining tree
T25	Eucalyptus moluccana	Grey Box	Retain	Adjoining tree
T26	Eucalyptus moluccana		Retain	Adjoining tree

LEGEND

Proposed cultivated planting area

Proposed Kikuyu turf

Proposed Planting on mound

Existing tree to be retained

TPZ (Tree Protection Zone)

Tree Protection Fence during Construction

Existing tree to be removed

Existing Acoustic wall to 2.5m high, to be painted green

Proposed green Acoustic wall 3m high

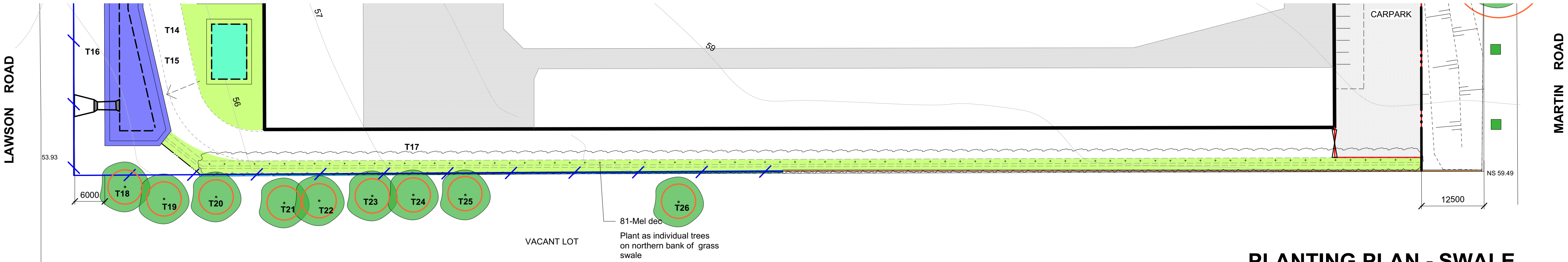
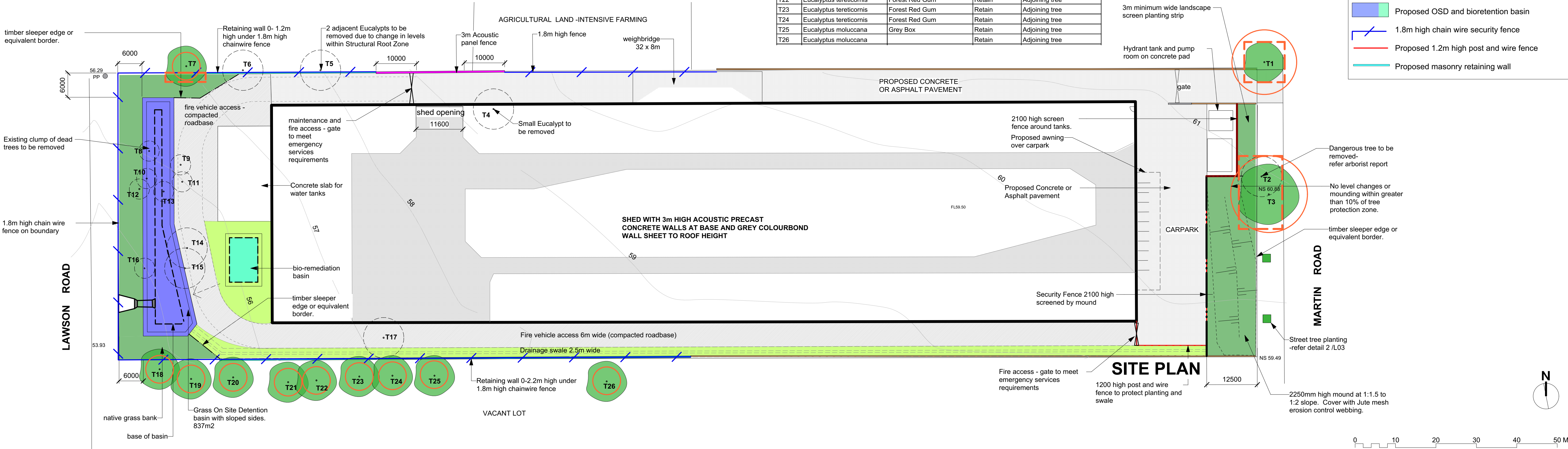
Proposed building

Proposed OSD and bioretention basin

1.8m high chain wire security fence

Proposed 1.2m high post and wire fence

Proposed masonry retaining wall



PLANTING PLAN - SWALE

REFER TO SHEET L02 FOR PLANTING ALONG ROAD FRONTAGES

Issue
DA 5 Nov 2015
A 5 Oct 2015 Acoustic mound moved, greenwaste added
B 17 Feb 2017 Large shed added, Acoustic mound removed, Planting amended
C 9 May 2017 Small shed removed planting strips along road ends widened..
D 14 June 2018 Carpark moved and awning added.
E 17 Jan 2019 Issue for Amended DA due to fire access requirements

Issue
F 21 Feb 2019 Fence and gates amended.
G 28 Feb 2019 Acoustic comments included
H 12 Apr 2019 Modified for pump room and tank.
J 16Mar 2020 Mounds added to street frontages

LANDSCAPE ARCHITECT
HLS Pty Limited
Lindy Lean - Landscape Architect
PO Box 313 Ashfield NSW 1800
phone 02 9797 9366 fax 9716 6034

Resource Recovery Facility
25 Martin Road Badgerys Creek
Lot 1 DP 611519

Landscape Plan

1:500 @A1

16 March 2020

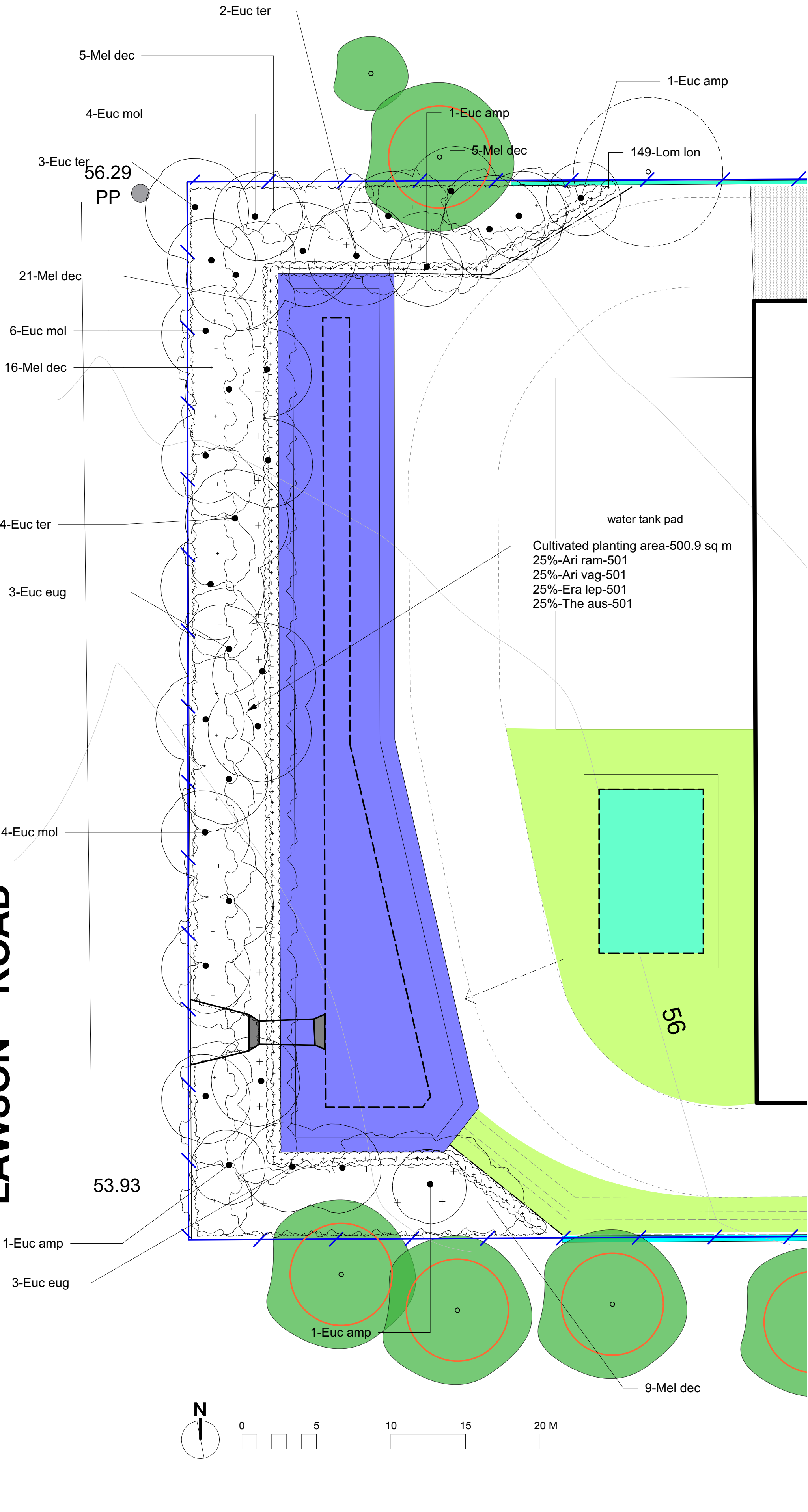
job no 09129

Issue J

L 01

Badgerys Creek Landscapes - Shed v2019 - wss 18print date: 16 March 2020

LAWSON ROAD

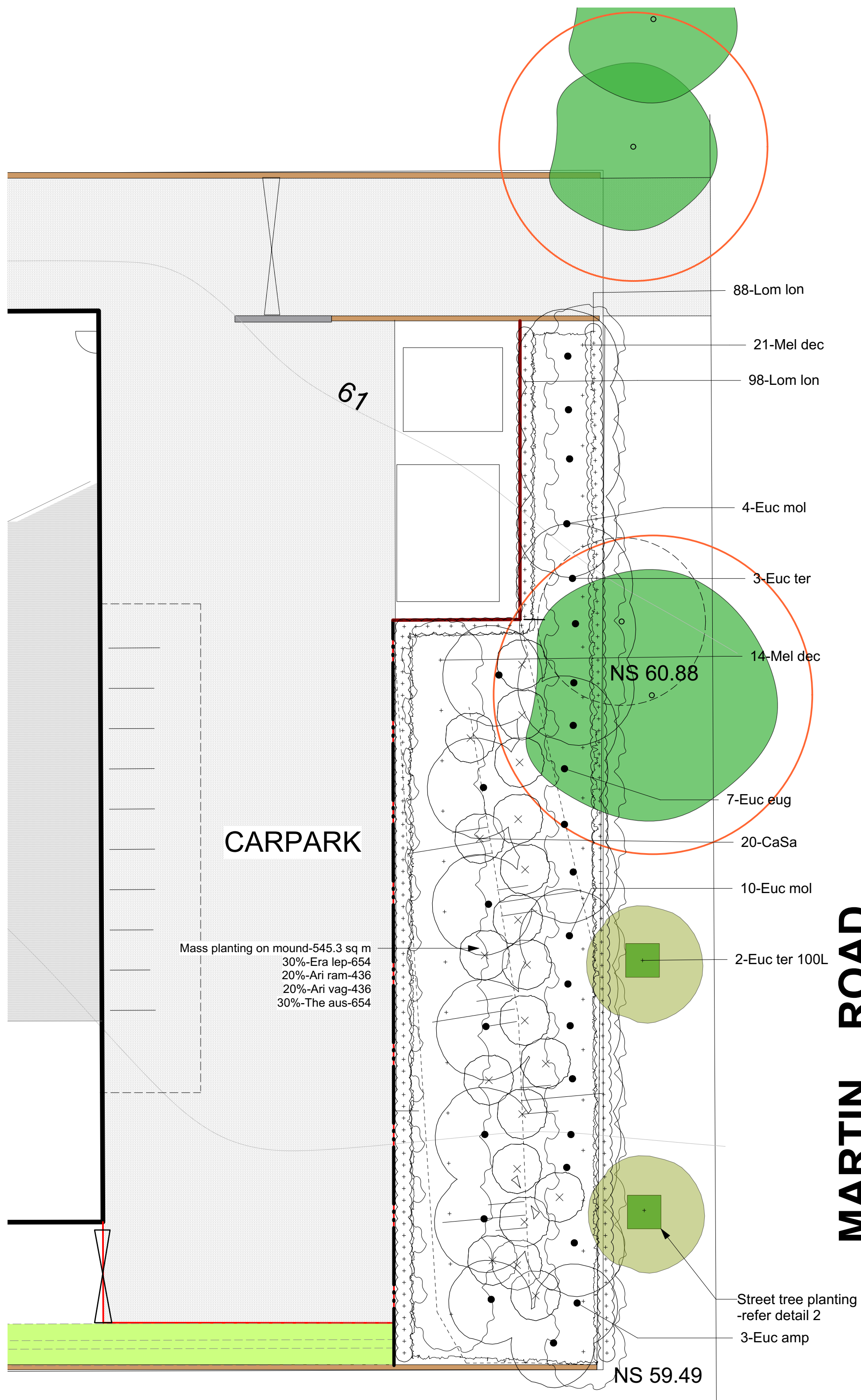


PLANTING PLAN - LAWSON ROAD FRONTAGE

Issue	Issue
DA 5 Nov 2015	F 21 Feb 2019 Fence and gates amended.
A 5 Oct 2015 Acoustic mound moved, greenwaste added	G 28 Feb 2019 Acoustic comments included
B 17 Feb 2017 Large shed added, Acoustic mound removed, Planting amended	H 12 Apr 2019 Modified for pump room and tank.
C 9 May 2017 Small shed removed planting strips along road ends widened..	J 16 Mar 2020 Mounds added
D 14 June 2018 Carpark moved and awning added.	
E 17 Jan 2019 Issue for Amended DA due to fire access requirements	

LANDSCAPE ARCHITECT
HLS Pty Limited
Lindy Lean - Landscape Architect
PO Box 313 Ashfield NSW 1800
phone 02 9797 9366 fax 9716 6034

PLANTING PLAN - MARTIN ROAD FRONTAGE



Plant List				
ID	Qty	Common Name	Botanical Name	Scheduled Size
Trees				
CaSa	20	Willow Bottlebrush	Callistemon salignus	
Euc amp	7	Cabbage Gum	Eucalyptus amplifolia	25 litre
Euc eug	13	Thin-leaved Stringybark	Eucalyptus eugenioides	25 litre
Euc mol	28	Grey Box	Eucalyptus moluccana	25 litre
Euc ter	12	Forest Red Gum	Eucalyptus tereticornis	25 litre
Euc ter 100L	2	Forest Red Gum	Eucalyptus tereticornis 100Litre	100 litre
Mel dec	172	White Feather Honeymyrtle	Melaleuca decora	25 litre
Grasses				
Ari ram	937	Purple Wiregrass, Wiregrass	Aristida ramosa	Tube
Ari vag	937	Three-awn Speargrass	Aristida vagans	tube
Era lep	1155	Paddock Lovegrass	Eragrostis leptostachya	tube
Lom lon	335	Spiny-headed Mat-Rush	Lomandra longifolia	tube
The aus	1155	Kangaroo Grass	Themeda australis	tube

MARTIN ROAD

Resource Recovery Facility
25 Martin Road Badgerys Creek
Lot 1 DP 611519

Landscape Plan

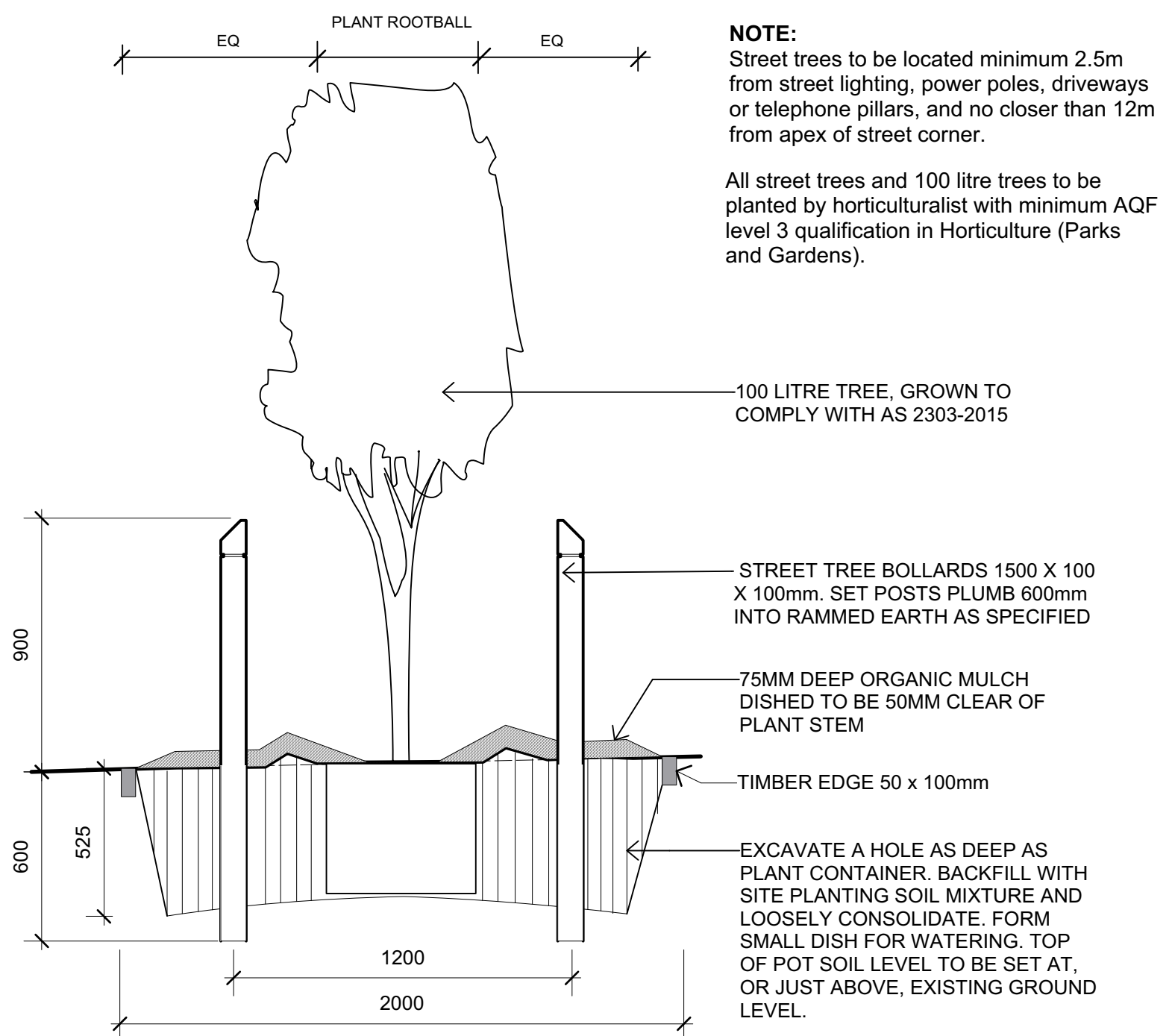
1:200 @A1

16 March 2020

job no 09129

Issue J

L 02



ERADICATE WEEDS AND KIKYU GRASS BY ENVIRONMENTALLY ACCEPTABLE METHODS

CUT HOLE THROUGH GEOTEXTILE AND EXCAVATE HOLE FOR TUBESTOCK NATIVE GRASS AND TREE SPECIES

GEOTEXTILE PEGGED TO SLOPE

75mm ORGANIC MULCH, DISH AT PLANT STEM

3:1 SITE TOPSOIL/COMPOST MIX 250mm DEEP. ADD FERTILISER

SUBGRADE

MASS PLANTING ON MOUND

SECTION SCALE 1:20



MAINTENANCE PERIOD: 6 months

REPLACEMENTS
Replace all plants that are missing, unhealthy or dead with plants of the same size, quality and species,. Replace on a continuing basis not exceeding 2 weeks. Fortnightly.